

# MONTHLY MEMBERSHIP PROGRESS REPORT

LOCATION MISSOURI

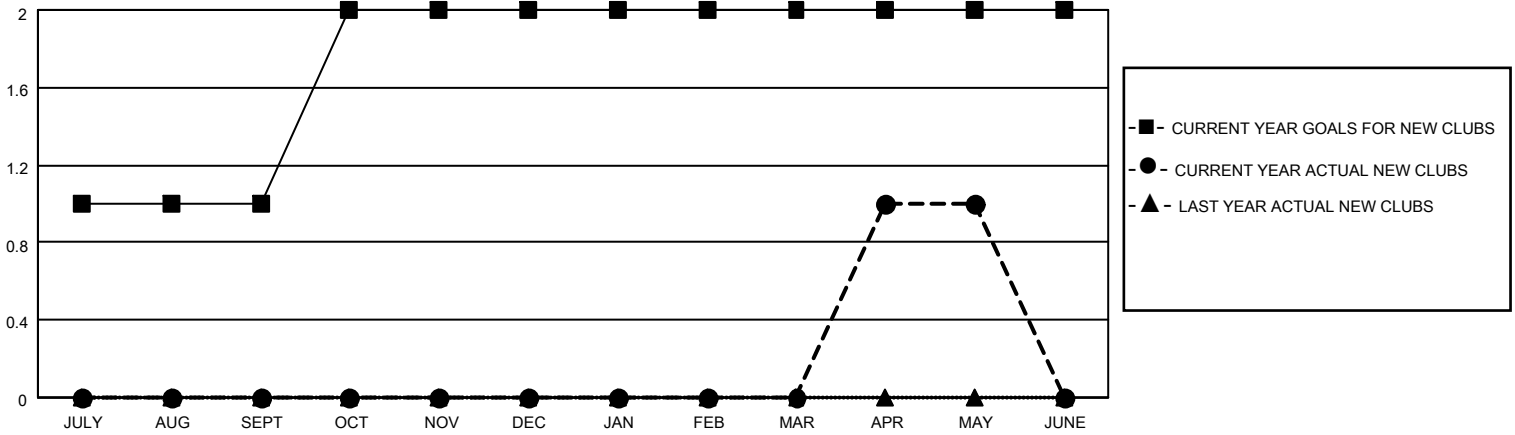
District 26 M3

Results as of: 5/31/2022

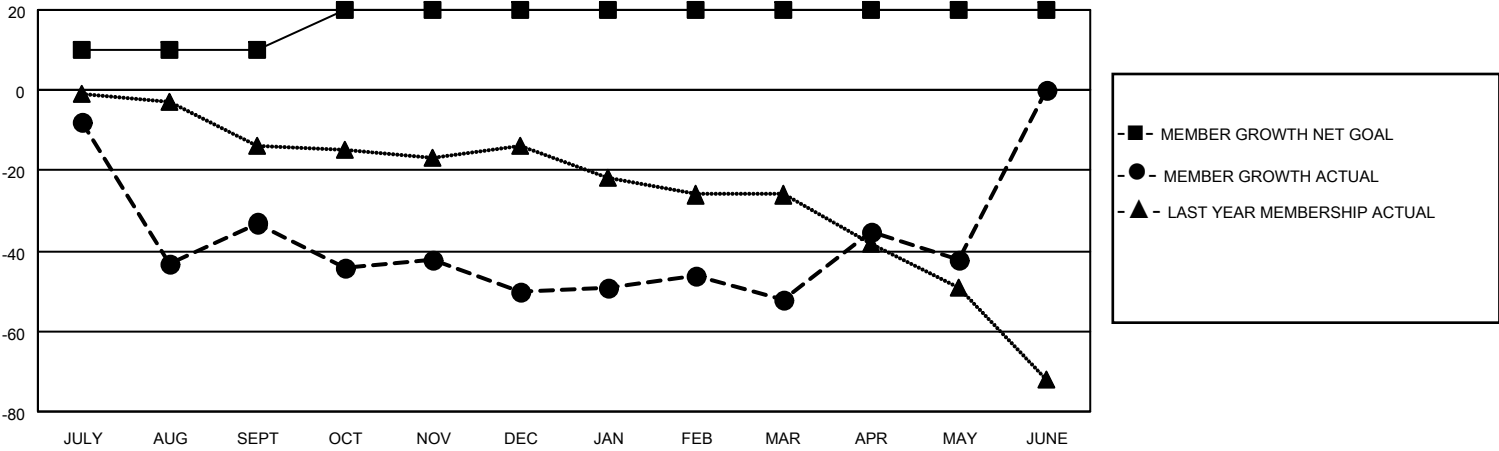
Clubs			
RESULTS FOR 2021-2022			
QUARTER	NEW CLUB GOAL	NEW CLUBS	DROPPED CLUBS
JULY/AUG/SEPT	1	0	1
OCT/NOV/DEC	1	0	2
JAN/FEB/MAR	0	0	0
APR/MAY/JUNE	0	1	1

Members			
RESULTS FOR 2021-2022			
QUARTER	MEMBER GROWTH NET GOAL	MEMBER GROWTH ACTUAL	DROPPED MEMBERS ACTUAL (including transfers)
JULY/AUG/SEPT	10	30	53
OCT/NOV/DEC	10	21	36
JAN/FEB/MAR	0	42	31
APR/MAY/JUNE	0	46	34

**GOALS AND ACTUAL NEW CLUBS CUMULATIVE**



**GOALS AND ACTUAL MEMBERS CUMULATIVE**



**DROPPED CLUBS: 4**

**25 CLUBS OF 56 ADDED 1 OR MORE NEW MEMBERS**

**GENDER DISTRIBUTION**

MALE	831 (73.22%)
FEMALE	304 (26.78%)
NON BINARY	0 (0.00%)
PREFER NOT TO ANSWER	0 (0.00%)

**DROPPED MEMBERS**

[CLICK HERE FOR CUMULATIVE MEMBERSHIP DATA](#)

DECEASED	23
CLUB CANCELLED	27
OTHER	104
<b>TOTAL</b>	<b>154</b>

TOTAL FAMILY UNIT MEMBERS	117
FAMILY MEMBERS PAYING HALF DUES	59